



Newsletter No 4

Term 1

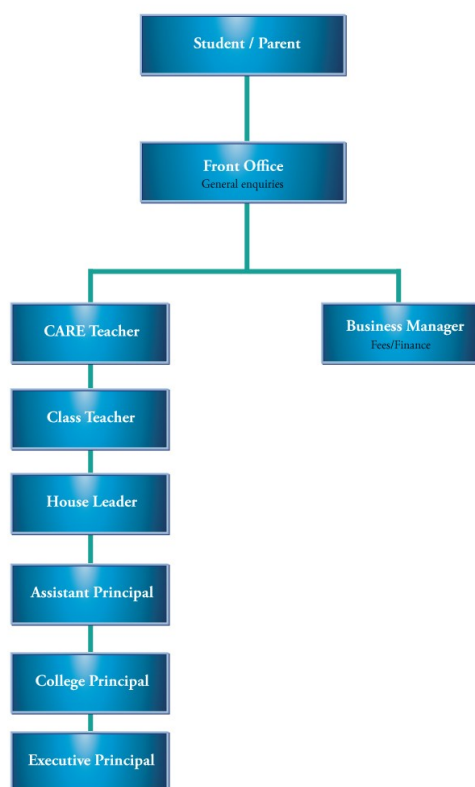
February 26, 2018

Principal's Report

Parent Communication

After the successful introduction of the house structure in 2018 we have continued this with a few minor changes. Some of these changes include a longer period of time that students see their CARE (formerly A-Team) teacher. We have found that students are feeling more connected to their House groups and are making connections with older and younger students as a result. Please see below a communication tree for parent contact within the school.

Communication Tree for Parents



Information Evening

Come along to our open evening and welcome barbecue this Wednesday February 28 from 6 – 7:30pm in the Huon Library.

This is an opportunity for students and parents to learn more about our programs, including CARE, D2L and Grade Point Average reports.

So come along this Wednesday February 28 at 6pm to find out where your education can take you.



Outdoor Education

Kayaking

Year 9 Outdoor Education students got out and about on Tuesday, putting their kayaking skills to the test



at Gateway Lakes. They have been learning how to balance when standing up, how to 'raft' and learning about safety on the water.



International Visitors

Indonesian Visitors

In October of this year, our schools will be hosting a number of students from Indonesia. They will be boys and girls from years 7 to 10.

We are looking for families to host these students for 10 days (including a weekend). The students will require their own room, three meals a day and passage to and from school.

Host families will receive \$400 reimbursement for the 10 nights. If you are interested in hosting, or have any questions, please contact Melanie McClure (mmcclure@wmyc.vic.edu.au), or Michelle Heintze (MHZ@wssc.vic.edu.au)

Maree Cribbes
Campus Principal

Mel McClure
Global Education Coordinator

Year 8

Phillip Island Camp

Places are still available for Felld timber Year 8 students to put their names down for the Phillip Island camp. Interested students should get an expression of interest form from the office.

Absence Hotline

If your child is absent from school, please call the
absence hotline **02 6057 9051**
with their
name, reason and date of absence

FELDTIMBER CAMPUS
Hedgerow Court, Wodonga, Victoria 3690
Ph: 02 6057 9000, Fax: 02 6059 2900

Absence Hotline
02 6057 9051

HUON CAMPUS
22-24 Mitchell Street, Wodonga, Victoria 3690
Ph: 02 6057 9000, Fax: 026024 3633

Email: wodonga.middle.years.co@edumail.vic.gov.au
www.wmyc.vic.edu.au



CSEF

Financial assistance through the Camps, Sports and Excursion Fund (CSEF) is available to eligible families to cover the costs of school trips, camps and sporting activities. If you hold a valid means-tested concession card, Veterans Affairs card or are a temporary foster parent, you may be eligible for CSEF.

The payment of \$225 for secondary students is made to the College to cover the camp, sport or excursion expenses for your child.

Students who are eligible for CSEF and who commence Year 7 in 2018 are also eligible for a one off uniform voucher.

Application forms are available from the office.

Stars of the Border

Fundraising

WMYC Assistant Principal Steve Fouracre is participating in the Cancer Council *Stars of the Border - Dance for Cancer*. Central Perk at Huon and The Bridge Cafe at Feltrimber have been allocating all funds raised towards Steve's fundraising, so far raising \$1084 towards the target from sales of milkshakes.

College Council

Election of Parent Members

Families will receive ballot papers for College Council elections today. Please read the instructions carefully. Voting envelopes should be returned to the campus office by 4pm Monday March 5.

VSL Head Office
315 Clarendon Street
Thornbury 3071
Telephone +61 3 9474 0500
Fax +61 3 9416 9899
E-mail vsl@vsl.vic.edu.au
www.vsl.vic.edu.au



VSL VICTORIAN SCHOOL
OF LANGUAGES
Quality language programs since 1935

Wodonga Centre

Location: Wodonga Middle Years College (Huon Campus)
Mitchell Street, Wodonga

Tuesday 4:00 pm - 6.30 pm

ENROL NOW

Chinese
French
Italian
Japanese
Punjabi
Spanish

Cost: Year 1 - Year 10
\$75 per year

Contact the Area Manager
Joanne Lepore

on **9474 0546**
or country3@vsl.vic.edu.au
for further information.

Enrol online at
www.vsl.vic.edu.au

***Years 11 and 12 students currently studying a language at their day school can enrol at the VSL Wodonga centre as 'Extra Tuition' students (Subject to availability) Fee \$220 per year**



Could you be a permanent care parent?

There are a number of children supported by the Department of Health & Human Services who require a *family for life* as they are unable to live with their birth families. We are seeking committed and motivated people who would be interested in learning more about providing a permanent family for a child.

Assistance payments are made to the Permanent Care family to assist with the day to day expenses of caring for a child/young person. Assistance payments are considered to be a reimbursement for expenses and not an earned income.

We are also keen to speak with families who are particularly interested in caring for children aged between 5 and 10 years.

Information sessions are being held on:

Tuesday 20th March 2018 at 6:00pm
Department of Health & Human Services
43-47 Rowan Street, **Wangaratta**

Wednesday 21st March 2018 at 6:00pm
Department of Health & Human Services
163-167 Welsford Street, **Shepparton**



Bookings not essential. For further information please contact:

Adoption & Permanent Care Program
03 5832 1552

Dates to Remember

Dates for 2017/18	Activity
March 6	► Feltrimber Year 7 Immunisations
March 12	► Labour Day Holiday
March 14 - 16	► Phillip Island Camp - Huon
March 27 - 29	► Phillip Island Camp - Feltrimber
March 21	► Harmony Day
March 28	► Student Led Conferences
March 29	► Term 1 ends
April 16	► Term 2 starts - Pupil Free Day
April 17	► First Day for Students Term 2